

## Technical data sheet - Corrugated tubes/recess tubes, round cross-section

### Product description

Sturdy recess tubes made of corrugated profiled strip steel.

### Product features

- Fast and simple processing
- Light weight
- Internal and external profiling ensures stability and high mechanical strength
- In vielfältigen Längen herstellbar

### Areas of application

- Empty conduits for creating recesses in concrete components, for example for supply lines.

### Product data

The standard length for the recess tubes is 3 metres. Other lengths and diameters on request.

Art.Nr	DN	Ø <sub>i</sub>	Ø <sub>a</sub>	e	b	h	s	kg/m
2004082	30	30±0,5	36±0,5	17,5±0,5	10	3	0,20	0,19
2004408	40	40±0,5	46±0,5	17,5±0,5	10	3	0,25	0,33
2004409	50	50±0,5	56±0,5	17,5±0,5	10	3	0,25	0,46
2004410	60	60±0,6	67±0,6	20±0,5	12,5	3,5	0,25	0,55
2004420	65	65±0,6	72±0,7	20±0,5	12,5	3,5	0,28	0,59
2004411	70	70±0,7	77±0,7	20±0,5	12,5	3,5	0,30	0,75
2004412	80	80±0,7	88±0,8	20±0,5	12,5	4	0,35	0,85
2004417	90	90±0,8	99±0,9	20±0,5	12,5	4,5	0,40	1,09
2004418	100	100±0,7	108±1	46	10,55	3,25	0,25	1,30
2004462	125	125±0,7	133±1	46	10,55	3,25	0,25	1,60
2004429	150	150±0,7	158±1	46	10,55	3,25	0,25	1,67

With: Ø<sub>i</sub>: inner diameter; Ø<sub>a</sub>: outer diameter; e: distance between turns; b: profiling width; h: profiling height; s: wall thickness: Wall thickness. Unless otherwise stated, dimensions in mm.

### Application

The recess pipes are cut to the required length. It is important to ensure that the pipes are not crushed and their shape altered as a result. When constructing concrete elements and precast concrete parts, the recess pipes are positioned and fixed at the planned points before concreting. If necessary, suitable protective measures must be taken to prevent the concrete from penetrating the ends. The pipes are then embedded in concrete. Sufficient covering of the recess pipe with concrete must be ensured. Careful work and suitable measures must be taken to ensure that the recess pipes are not displaced, for example when compacting the concrete.

### Notes

Despite the corrugated profile, the recess tubes are sensitive to punctual and high mechanical loads and can become deformed. High mechanical loads must be avoided to ensure that the recess tubes retain their shape, tightness and dimensional accuracy.

### Storage

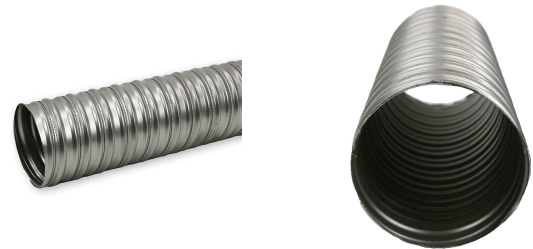
Can be stored for 2 years in cool and dry rooms.

### Packaging

Packed in bundles or on pallets, depending on quantity.

### Technical properties

Colour	metallmetallic grey
Material	Cold-rolled strip DC01 (1.0330) or DX51 (galvanised - 1.0226)



The information in this data sheet has been compiled with care on the basis of our experience and the current state of science and technology, but is not binding. It must be adapted to the respective building object, intended use and the particular local stresses. With this in mind, we ask for your understanding that we limit our liability for the information provided in this data sheet and accept no liability in the event of intent, gross negligence or violation of the instructions. The recognised rules of technology must be observed in all cases.

Issue 12/23 - This data sheet has been technically revised. Previous editions are invalid; this edition loses its validity in the event of a technically revised new edition. Please check whether you are in possession of the current edition.